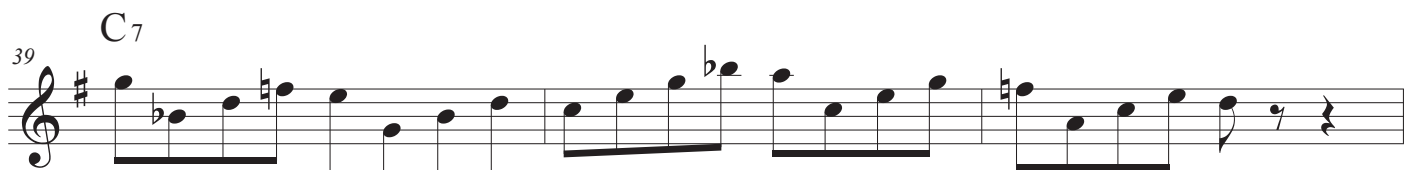
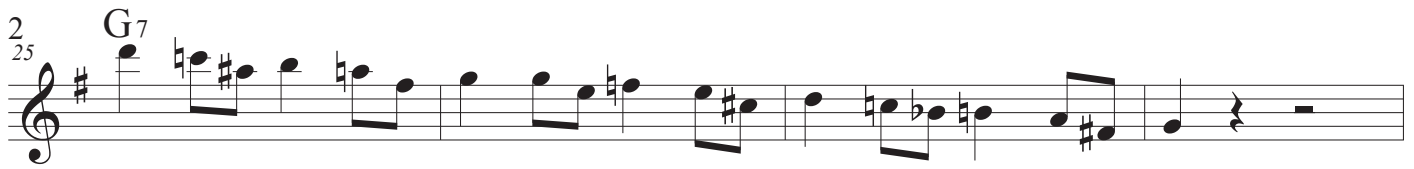


Eb

DOMINANT SCALE WORKOUTS

DOMINANT SCALE WORKOUTS



DOMINANT SCALE WORKOUTS

3

49 **C₇**

53 **C₇**

56 **C₇**

60 **C₇**

⑥ **F₇**

65 **F₇**

67 **F₇**

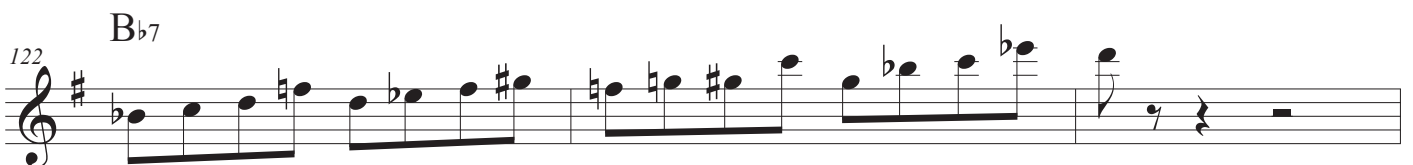
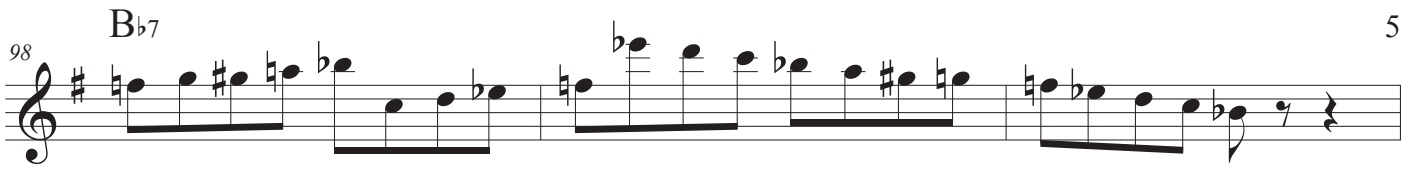
70 **F₇**

DOMINANT SCALE WORKOUTS



DOMINANT SCALE WORKOUTS

5



DOMINANT SCALE WORKOUTS

6 D₇



127 D₇



129 D₇



132 D₇



135 D₇



138 D₇



142 D₇



146 D₇



DOMINANT SCALE WORKOUTS

149 D₇

153 D₇

9 A₇

158 A₇

160 A₇

163 A₇

166 A₇

169 A₇

DOMINANT SCALE WORKOUTS

8 A₇
173

177 A₇

180 A₇

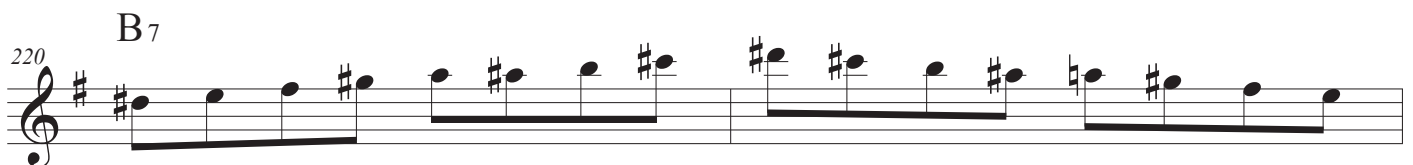
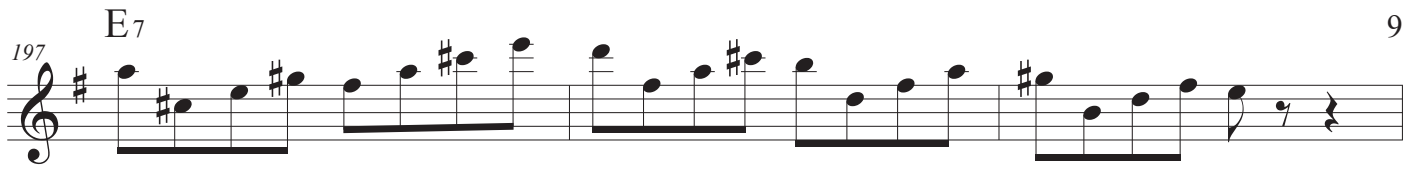
184 A₇

10 E₇

189 E₇

191 E₇

194 E₇



DOMINANT SCALE WORKOUTS

10 B₇
222

225 B₇

228 B₇

231 B₇

235 B₇

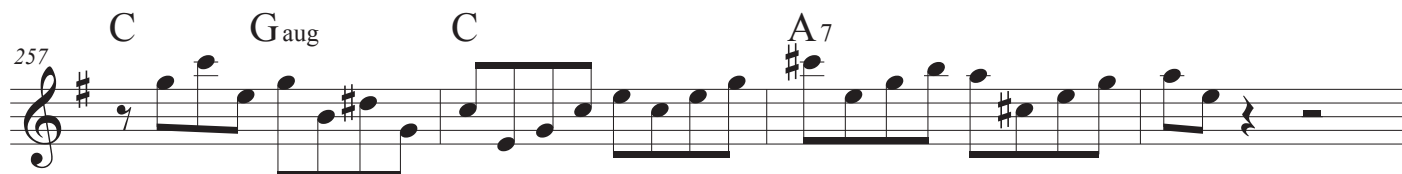
239 B₇

242 B₇

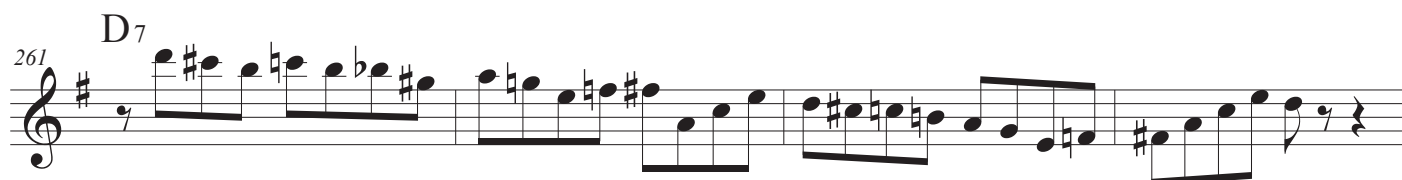
246 B₇



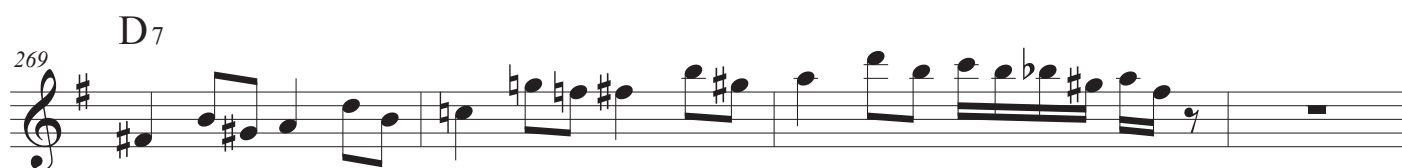
It had to be you - #1



It had to be you - #2



It had to be you - #3



It had to be you - #4



DOMINANT SCALE WORKOUTS

12 D₇
281

This musical staff contains measures 12 to 281 of the exercise 'Sweet Georgia Brown #1'. It is written in treble clef with a key signature of one sharp (F#). The D₇ chord is indicated above the staff. The melody consists of eighth and sixteenth notes, with some beamed sixteenth notes and a final quarter note.

Sweet Georgia Brown #1

285 G₇

This musical staff contains measures 285 to 300 of the exercise 'Sweet Georgia Brown #1'. The G₇ chord is indicated above the staff. The melody continues with eighth and sixteenth notes, ending with a quarter rest.

289 C₇

This musical staff contains measures 289 to 300 of the exercise 'Sweet Georgia Brown #1'. The C₇ chord is indicated above the staff. The melody continues with eighth and sixteenth notes, ending with a quarter rest.

293 D₇

This musical staff contains measures 293 to 300 of the exercise 'Sweet Georgia Brown #2'. It is written in treble clef with a key signature of one sharp (F#). The D₇ chord is indicated above the staff. The melody consists of eighth and sixteenth notes, ending with a quarter rest.

Sweet Georgia Brown #2

297 G₇
3

This musical staff contains measures 297 to 300 of the exercise 'Sweet Georgia Brown #2'. The G₇ chord is indicated above the staff. A triplet of eighth notes is marked with a '3' below the staff. The melody continues with eighth and sixteenth notes, ending with a quarter rest.

301 C₇

This musical staff contains measures 301 to 305 of the exercise 'Sweet Georgia Brown #2'. The C₇ chord is indicated above the staff. The melody continues with eighth and sixteenth notes, ending with a quarter rest.

305 D₇

This musical staff contains measures 305 to 309 of the exercise 'Sweet Georgia Brown #3'. It is written in treble clef with a key signature of one sharp (F#). The D₇ chord is indicated above the staff. The melody consists of eighth and sixteenth notes, ending with a quarter rest.

Sweet Georgia Brown #3

309 G₇

This musical staff contains measures 309 to 313 of the exercise 'Sweet Georgia Brown #3'. The G₇ chord is indicated above the staff. The melody continues with eighth and sixteenth notes, ending with a quarter rest.

313 C₇

This musical staff contains measures 313 to 317 of the exercise 'Sweet Georgia Brown #3'. The C₇ chord is indicated above the staff. The melody continues with eighth and sixteenth notes, ending with a quarter rest.



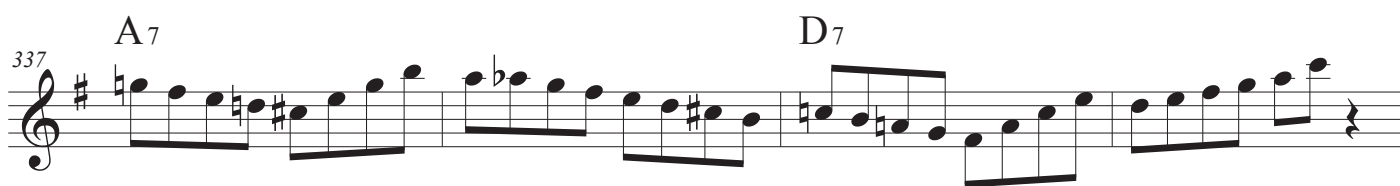
I've got rhythm middle 8 #1



I've got rhythm middle 8 #2



I've got rhythm middle 8 #3



I've got rhythm middle 8 #4

